

## December 2021 Upper Merion Township Open House



In fall 2021, SEPTA's King of Prussia Rail project (KOP Rail) was granted entry into the [project development phase](#) of the Federal Transit Administration's (FTA) New Starts grant program. On Tuesday, December 7, 2021, SEPTA hosted a KOP Rail Open House for Upper Merion Township residents and business owners to learn about this critical milestone and next steps.

At this in-person meeting at the Alloy King of Prussia, attendees joined project team members between 6:30 PM and 8:30 PM to view five informational display boards and [a 3D video](#) of KOP Rail's route. Attendees were able to ask questions or provide comment to the project team members.

The informational display boards and meeting handouts are provided in this PDF.

If you were unable to attend the Upper Merion Township Open House, you can submit questions or comments through the [project website comment form](#), by emailing [info@kingofprussiarail.com](mailto:info@kingofprussiarail.com), or on Twitter and Facebook at @koprail. SEPTA will also accept letters and comment forms mailed to the following address:

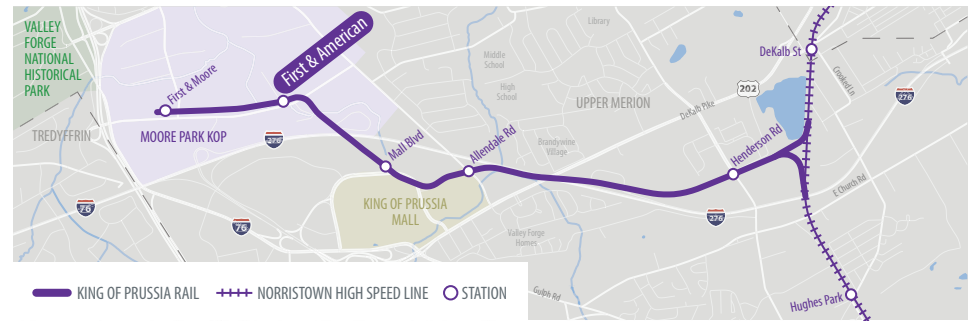
SEPTA King of Prussia Rail Project  
c/o McCormick Taylor, Inc. ATTN: ELM  
1818 Market Street, 16th Floor  
Philadelphia, PA 19103

Thank you to all who attended the Open House. Stay up-to-date on KOP Rail's progress by visiting [www.kingofprussiarail.com](http://www.kingofprussiarail.com) and by [subscribing to the project eNewsletter](#).



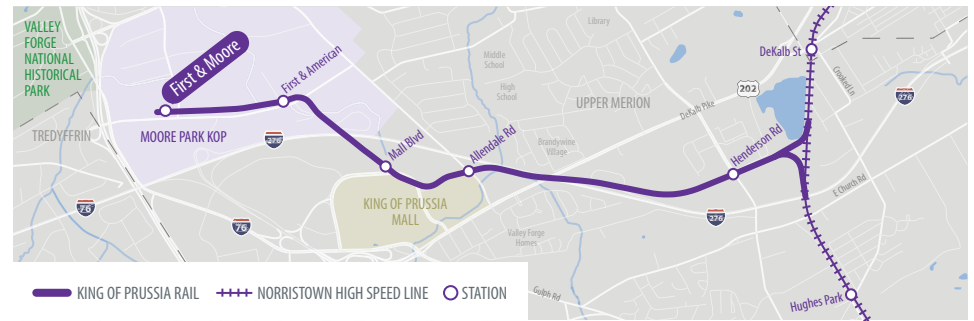


## First & American Station



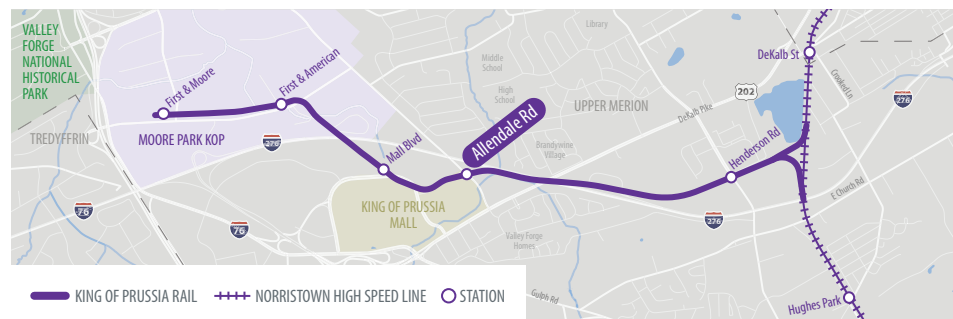


## First & Moore/ Valley Forge Station





## Allendale Rd Station





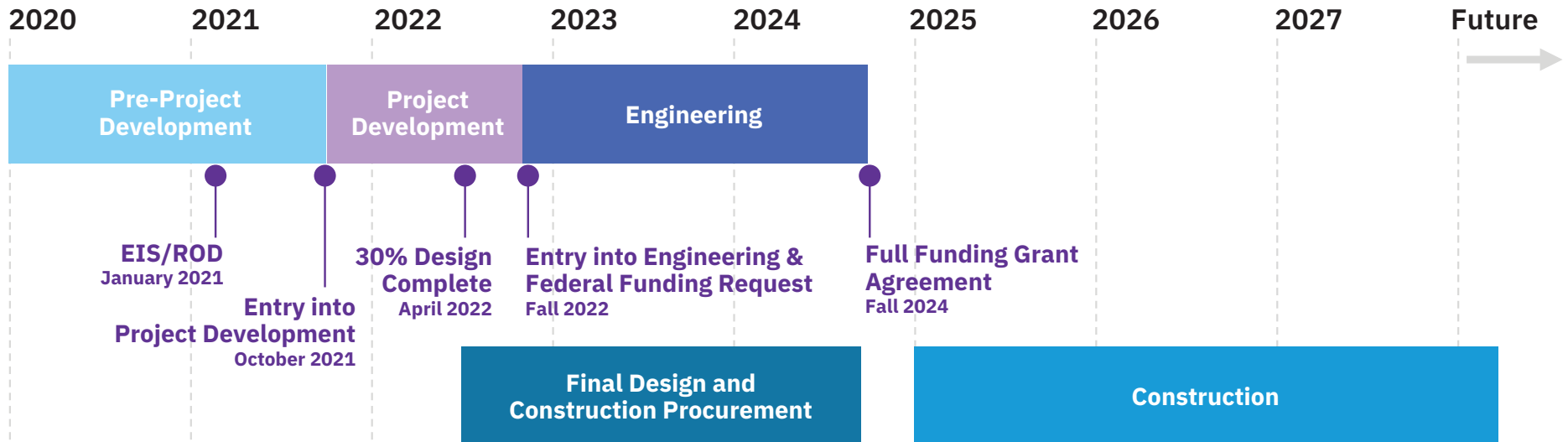


Similar to other new rail projects around the country for cost per mile

## Project Costs & Funding: \$2 Billion

- Funding will come from:
  - Various government sources
  - Public-private partnerships
  - Innovative finance options
- SEPTA will seek up to 50% of the project's funding from the FTA's New Starts Program.
- KOP Rail will seek federal funding separate from other projects and not re-direct federal money from other transportation needs or potential projects.

## Project Timeline



## Project Benefits

Stimulates commercial development, jobs, and annual earnings



Promotes and Strengthens Regional Growth



Connects People More Reliably, Conveniently, and Efficiently

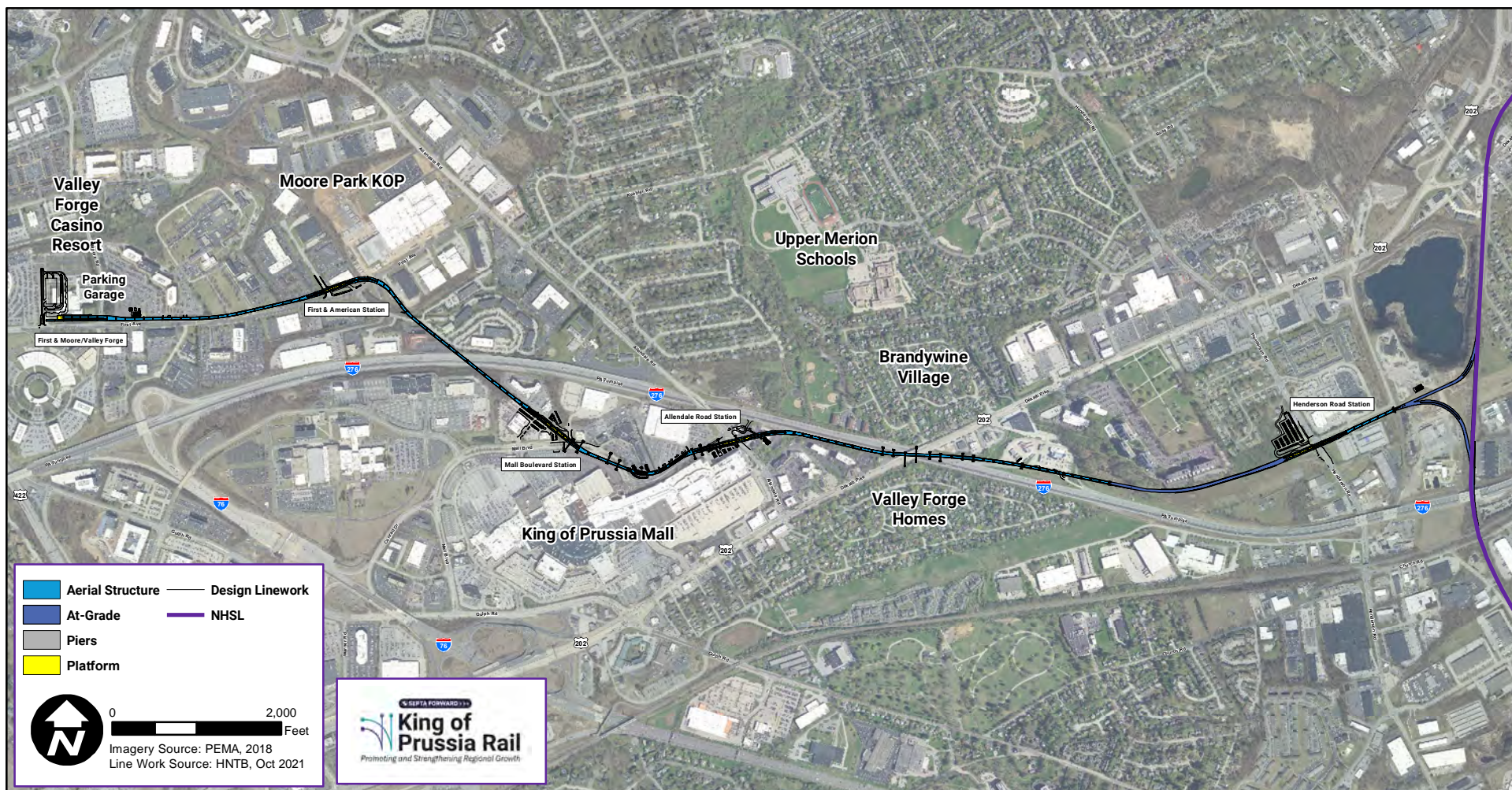


Increases Equity and Access



Benefits the Environment







# PROJECT BENEFITS



King of Prussia (KOP) Rail will extend the existing Norristown High Speed Line (NHSL) into KOP, providing a one-seat ride from KOP to any station along the NHSL and a two-seat ride to Philadelphia.

KOP Rail furthers SEPTA's mission of delivering safe, reliable, sustainable, and accessible public transit services, contributing to the region's economic vitality, sustainability, and enhanced quality of life.



## Why KOP RAIL



### Promotes and Strengthens Regional Growth

KOP Rail links Center City, University City and King of Prussia – the region's three largest employment centers. More connections and greater flexibility attract businesses and homebuyers to the region; property values are projected to increase by \$2.5 billion and commercial real estate values by \$260 million.



### Increases Equity and Access

With fully accessible stations and cars, KOP Rail addresses the growing mobility needs of seniors and people with disabilities. It also provides improved access to employment opportunities throughout the region, allowing for earnings to be invested back into communities.



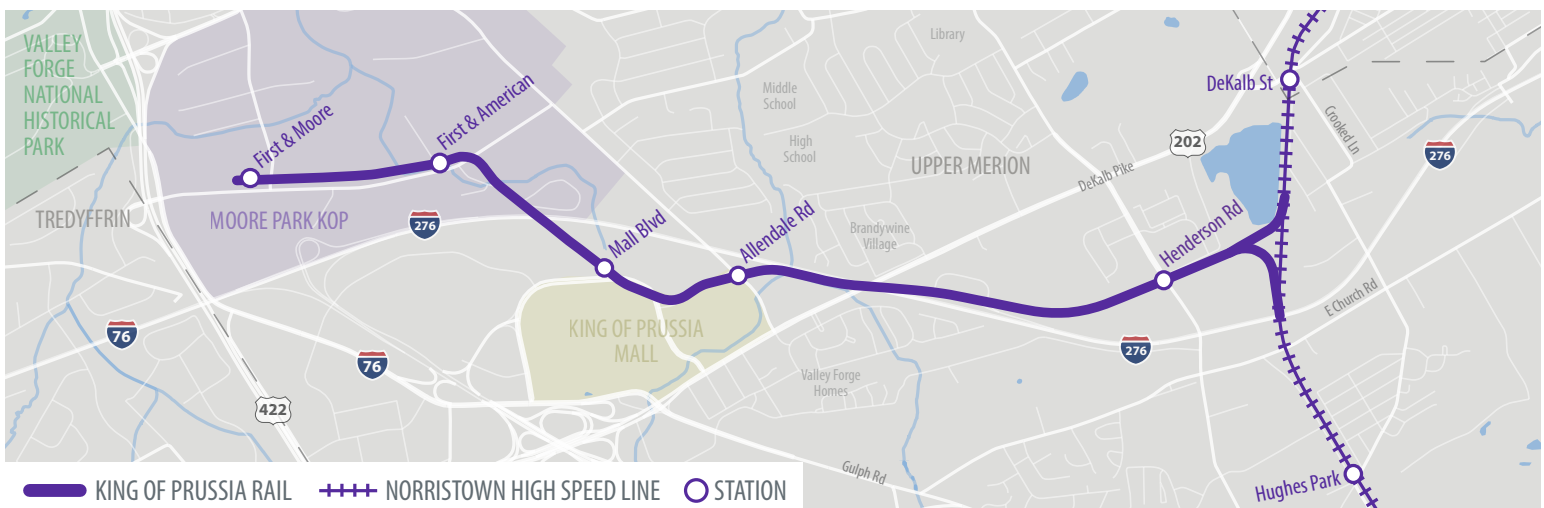
### Connects People More Reliably, Conveniently, and Efficiently

Suburban riders can access Philadelphia for medical centers, shopping, and cultural institutions without the hassle and expense of parking and a reduced commute from an average 70-minute drive to a 40-minute KOP Rail trip. Current bus commuters to King of Prussia have substantially increased reliability – rail is 99% on time versus 65% for busses due to traffic.



### Benefits the Environment

KOP Rail targets an annual reduction of up to 18,000,000 vehicle miles traveled. Public transit lowers emissions substantially - a single commuter who switches to public transit can reduce household carbon emissions by 10%.



# What would you like the area around the stations to be like in the future?



Keep an eye out for a community meeting in early 2022 for SEPTA's Transit-Oriented Communities study. Sign up for the KOP Rail email list to learn more:

[www.kingofprussiarail.com/subscribe](http://www.kingofprussiarail.com/subscribe)

[www.kingofprussiarail.com](http://www.kingofprussiarail.com)

