

PROMOTES EQUITY AND QUALITY OF LIFE

AFFORDABILITY

TRANSIT IS PRESERVING AFFORDABILITY AND ACCESS TO OPPORTUNITY IN A GROWING REGION

Transit reduces household expenses. In the City of Philadelphia, proximity to high quality transit **saves the average household \$830 annually (\$481M citywide)**. SEPTA moves 1 million people each day to jobs and destinations throughout the region. For the **one-third of Philadelphia households without access to a car, transit is a vital lifeline.**



DIVERSITY

- 68% NEW HIRES** in the last three years are women or minority
- 49% MANAGERS** are minority up from **39%** five years ago
- 45% WORKFORCE** Reports directly to a minority or woman, up from **26%** five years ago

CONTRACTOR DIVERSITY

SEPTA is one of only five PA agencies that continues to certify firms as Disadvantaged Business Enterprises (DBE) and the directory has grown to more than 800 DBE firms. SEPTA applies federal DBE goals to all major procurements to provide greater opportunities for small, minority and women-owned businesses.

SAFETY & PUBLIC HEALTH

THE HIDDEN TRAFFIC SAFETY SOLUTION

TRANSIT SUPPORTS HEALTHY LIFESTYLE

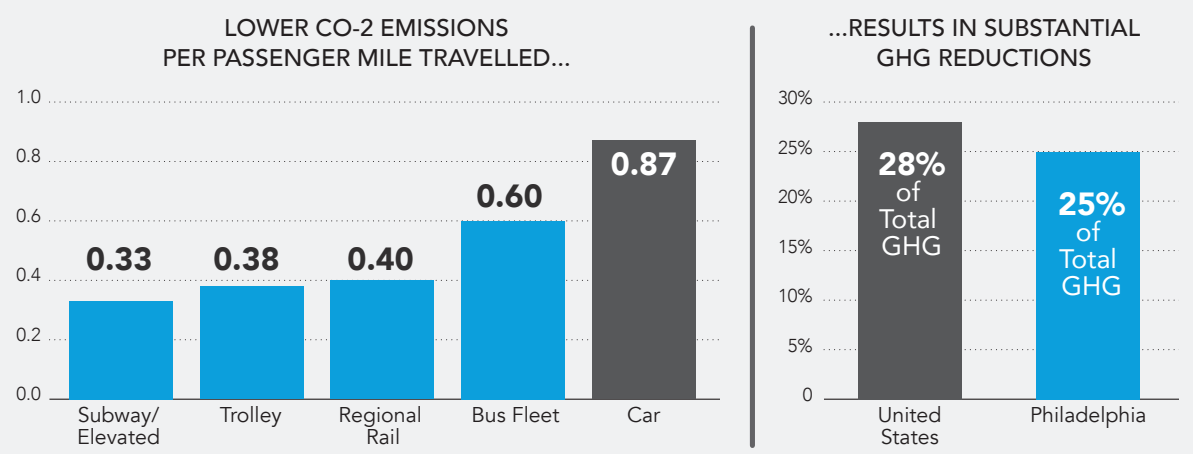
As Transit Travel Increases, Traffic Fatalities Decrease

10X SAFER THAN DRIVING (Bus/Rail Transit) **18X SAFER THAN DRIVING** (Regional Rail)

The U.S. Centers for Disease Control recommends that adults average at least 22 daily minutes of moderate physical activity, such as brisk walking, to stay fit and healthy. Although less than half of American adults achieve this target, **most public transportation passengers do exercise the recommended amount while walking to and from transit stations and stops.**

ADVANCES SUSTAINABILITY

TRANSIT IS INHERENTLY SUSTAINABLE Reduces Greenhouse Gas (GHG) Emissions From the Transportation Sector

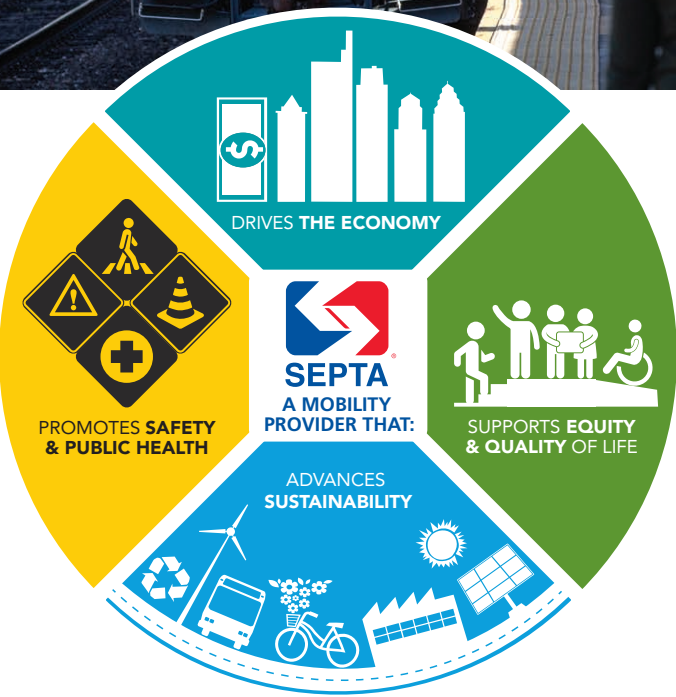


AWARD-WINNING SUSTAINABILITY PROGRAM Projects to deepen environmental benefits of investing in transit



Learn more about SEPTA's Sustainability Program at septa.org/sustain

SEPTA VALUE PROPOSITION



- Multimodal "Legacy System"
- Created by PA State Legislature in 1964
- 5th Largest Mass Transit System in the U.S.
- 1 Million Weekday Riders (300 Million Annually)
- 2,800 Vehicles
- 9,500 Employees
- \$1.4B Operating Budget
- \$675M Capital Budget

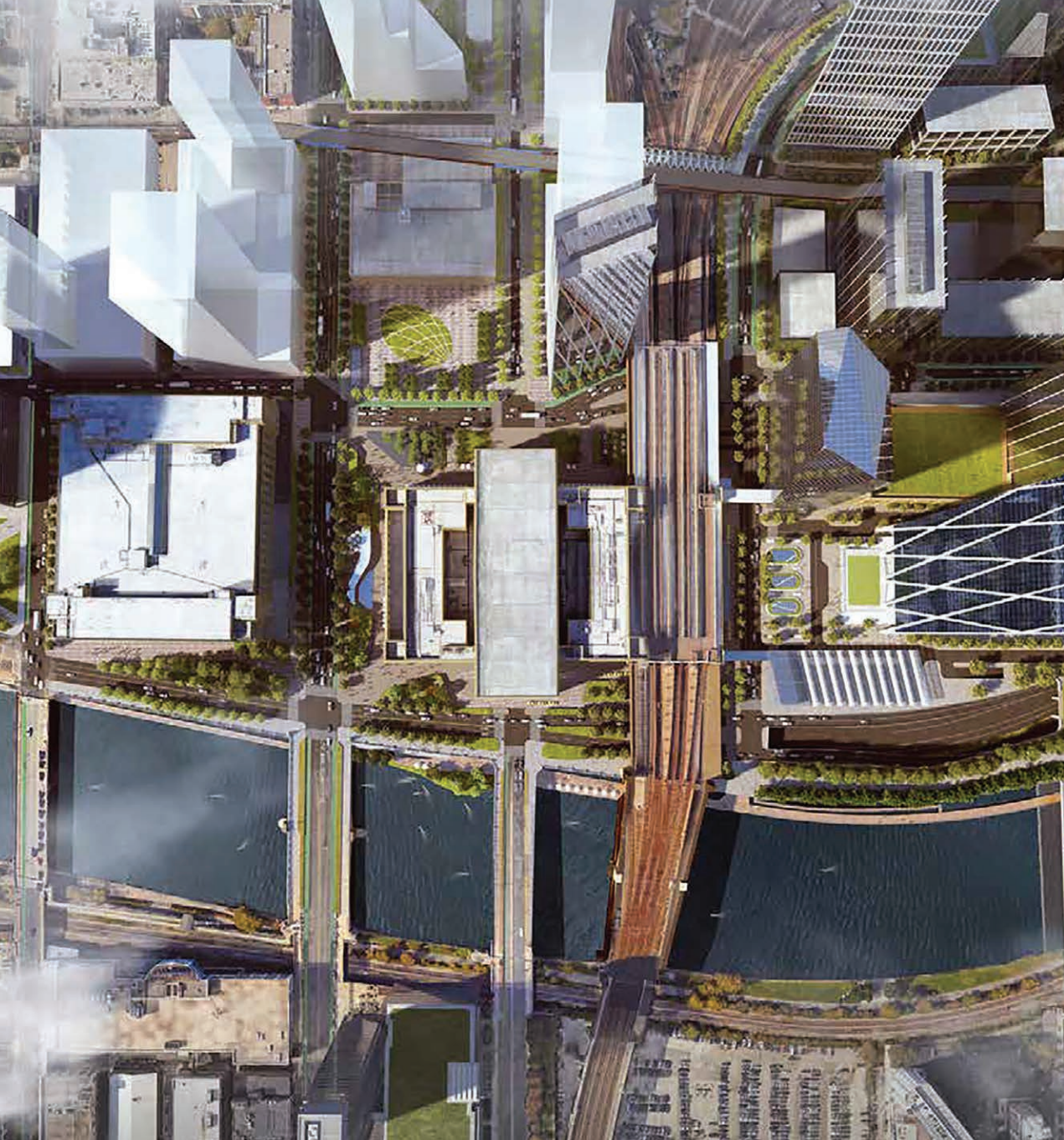
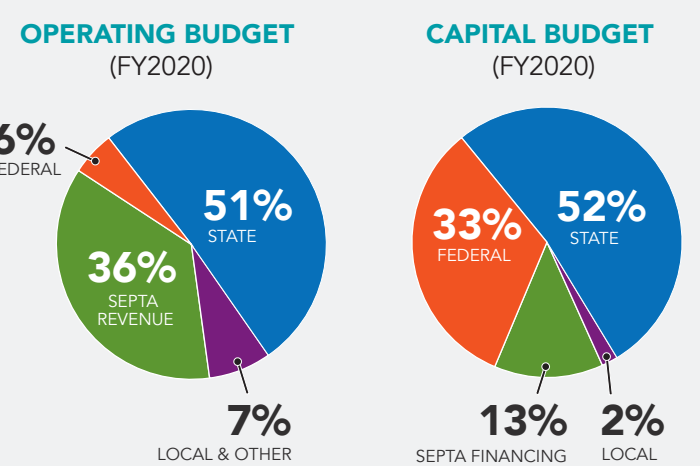
SEPTA FUNDING AT A GLANCE

SEPTA's operating and capital budgets are funded through subsidies from local, state and federal governments, the fare box and other revenues.

SEPTA must meet a state legislatively mandated requirement to secure sufficient local funds to match state operating subsidy dollars.

SEPTA must secure state and local support to match federal capital funds.

Since 2013, state funding has provided SEPTA with a financial foundation to tackle a growing backlog of deferred maintenance on capital assets. SEPTA is six years into a 20-year program to **rebuild the system for the future.**



MORE THAN THE RIDE

2020 IMPACT REPORT

AN ECONOMIC ENGINE...

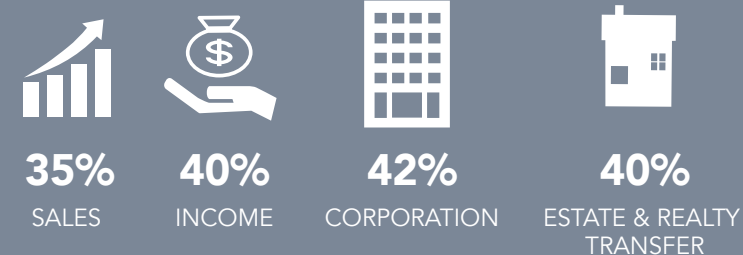
SOUTHEASTERN PA IS THE COMMONWEALTH'S KEY ECONOMIC ENGINE

The five counties generate 42% of the state's economic activity with 32% of its population on 5% of its land. This degree of economic productivity and density is not possible without transit to efficiently move people throughout the region.



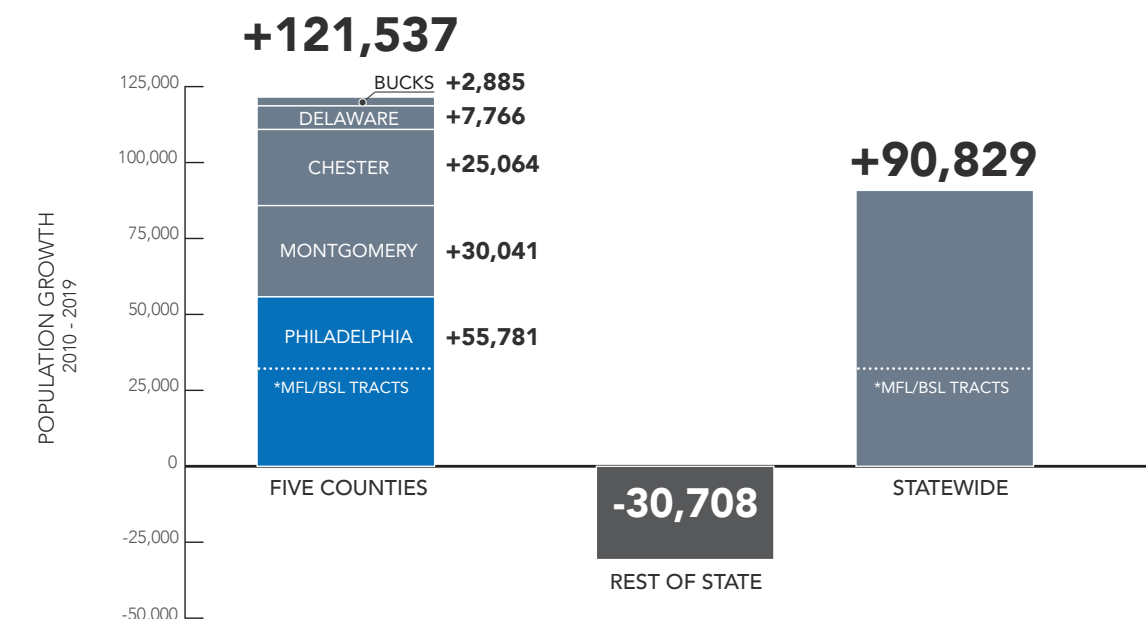
SOUTHEASTERN PA GENERATES \$13.3 BILLION (38%) OF THE TOTAL TAX REVENUES TO THE STATE GENERAL FUND

Southeastern PA Share of State Tax Revenues



THE FIVE COUNTIES ARE GROWING

*Southeastern PA led the state's population growth between 2010 and 2019, one-third of which occurred along the Market-Frankford (MFL) and Broad Street (BSL) Lines.



THAT SHAPES PHILADELPHIA...

In Center City Philadelphia since 2010, new development eliminated more than 4,000 public parking spaces. Skyscrapers are now being built with no parking. **EMPLOYMENT HAS GROWN BY MORE THAN 65,000 JOBS, AND 62% OF ALL WORK TRIPS ARE NOW TAKEN ON TRANSIT.**

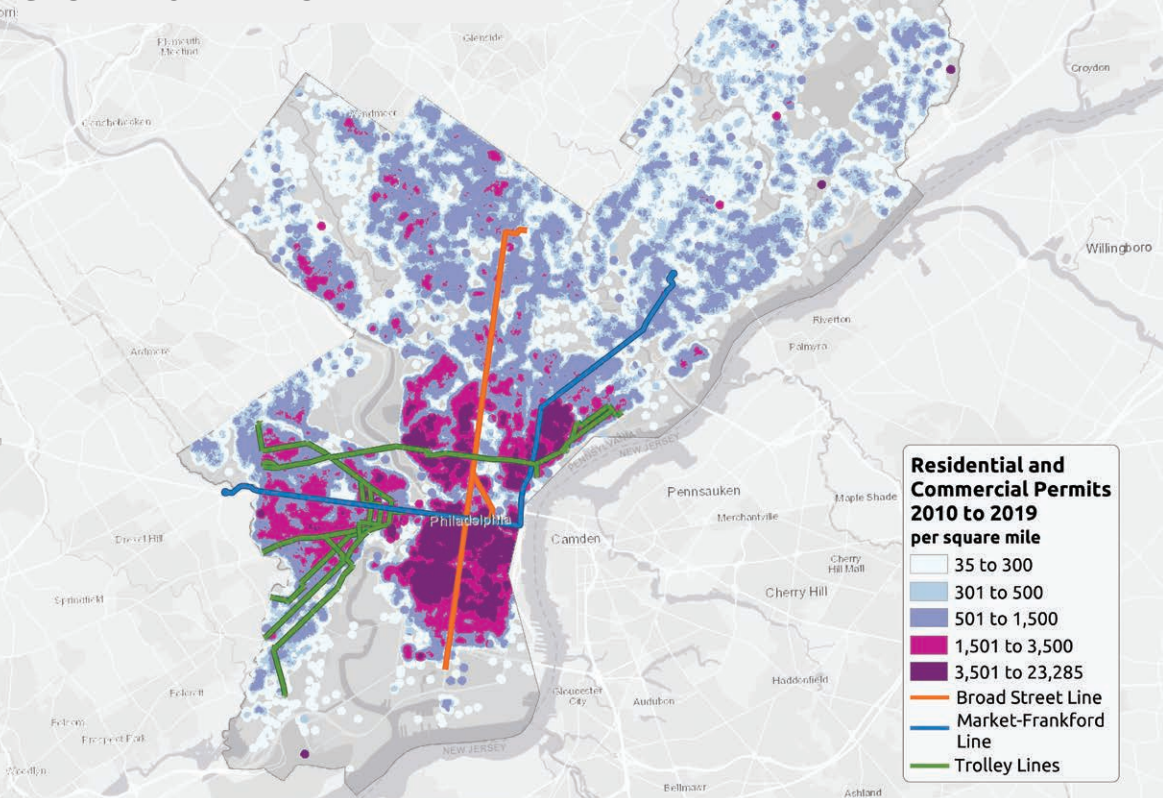


NOT POSSIBLE WITHOUT TRANSIT - SPACE IS LIMITED

SOURCE: JARRETT WALKER + ASSOCIATES



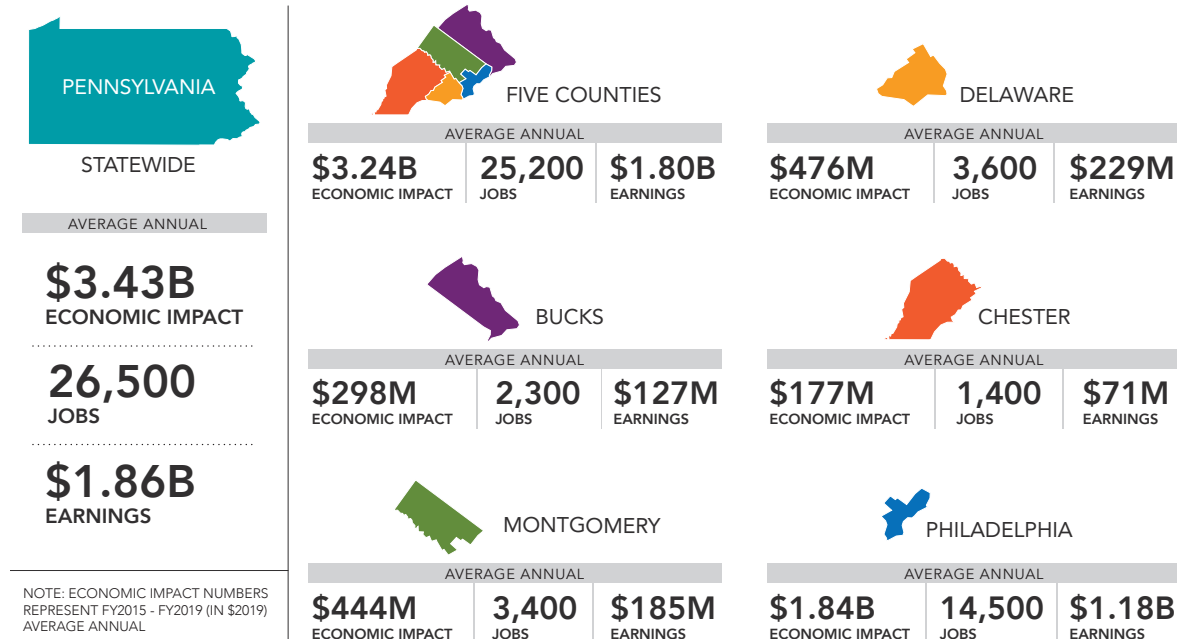
SEPTA WILL CONTINUE TO DRIVE GROWTH & DEVELOPMENT



CREATES JOBS ACROSS PENNSYLVANIA...

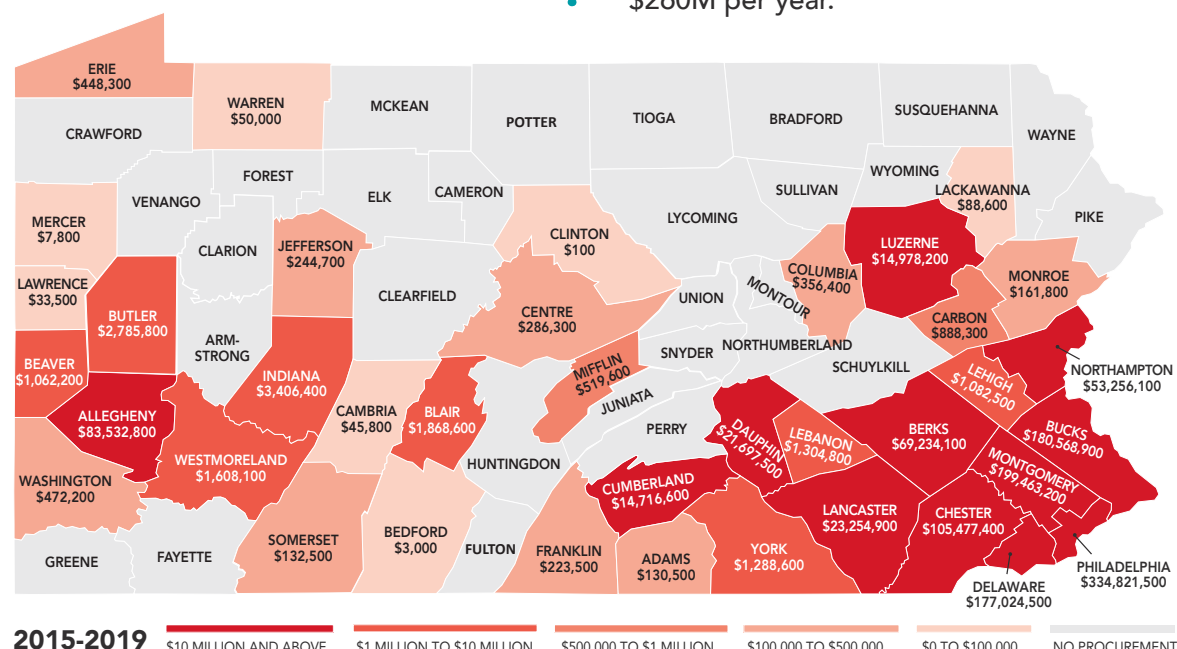
SEPTA GENERATES MORE THAN \$3 BILLION IN ANNUAL STATEWIDE ECONOMIC ACTIVITY AND HAS CATALYZED ADDITIONAL GROWTH AND DEVELOPMENT ACROSS SOUTHEASTERN PA

Every day, SEPTA's 2,800 trains, trolleys, buses and Paratransit vehicles provide more than one million passenger trips across the region to work, school, appointments, and entertainment. Dedicated state funding ensures that SEPTA can keep the economy moving.



SEPTA PROCUREMENT OF GOODS AND SERVICES SUPPORTS JOBS AND ECONOMIES ACROSS PENNSYLVANIA

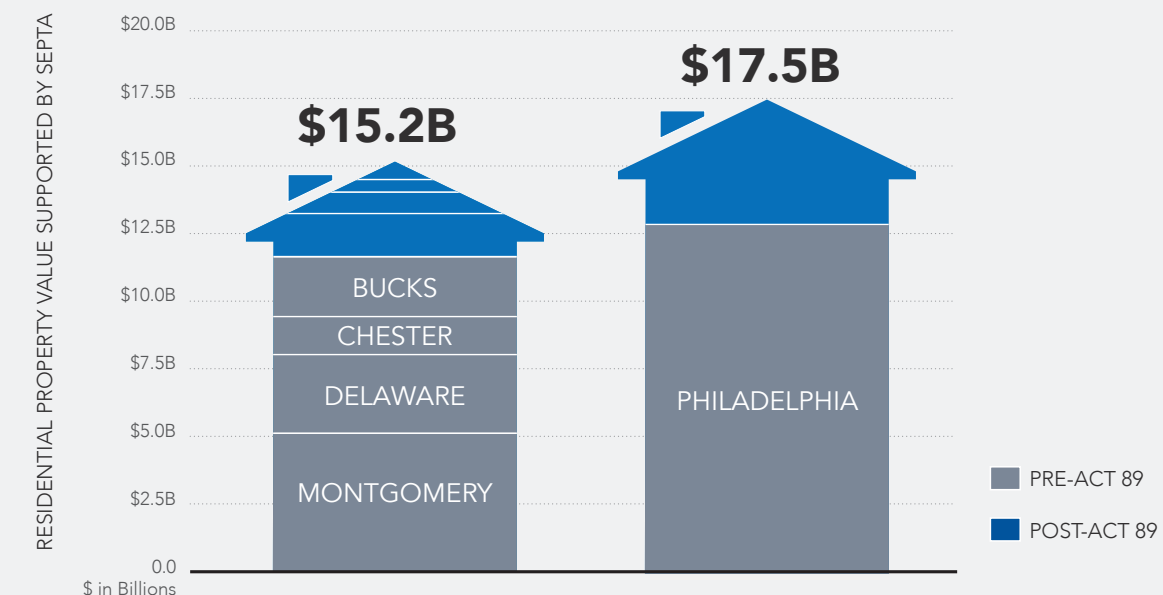
With funding from Act 89, SEPTA continues to invest in Pennsylvania businesses. Over the past five years (2015 - 2019), SEPTA has issued a total of \$1.3B in contracts to PA companies, an average annual value of \$260M per year.



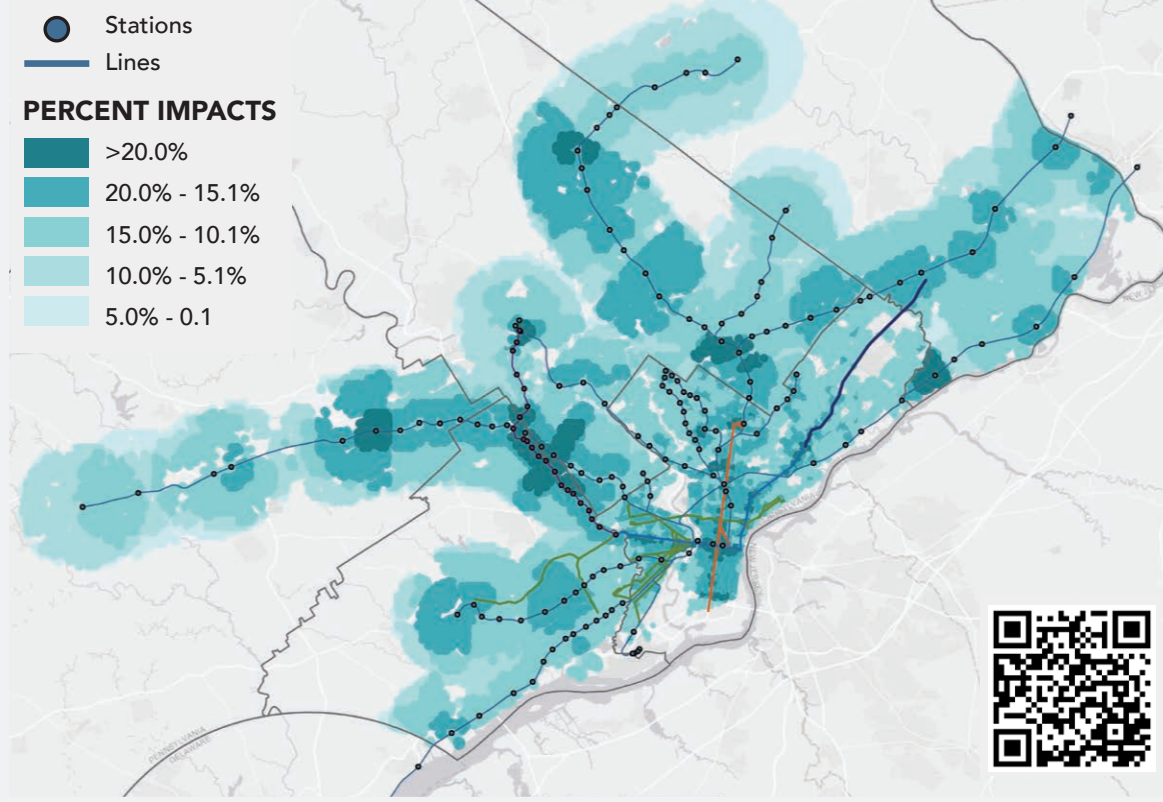
ADDS VALUE THROUGHOUT THE REGION

ACCESS TO TRANSIT INCREASES HOME VALUES

Statistical models allow economists to isolate this value through the analysis of housing sales. **Access to SEPTA service contributes a premium of \$33 billion in housing value, representing 11% of total housing value in southeastern PA.**



RESIDENTIAL PROPERTY VALUE INCREASES BASED ON PROXIMITY TO SEPTA TRANSIT



Learn more about SEPTA's positive impact in your community septa.org/strategic-plan/impact-report.html